

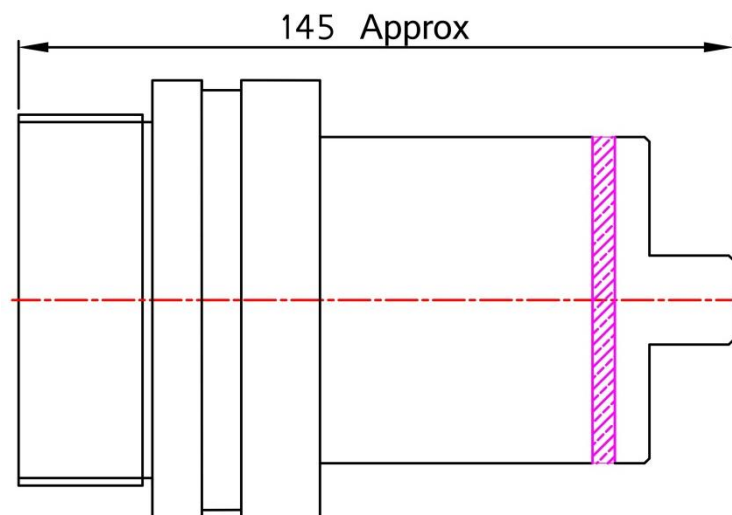
## Hydrant Booster-Single Inlet with CFA/NSW/MFB/QRT/SA/BI Inlets & Roll Groove Outlet



The Hydrant Boosters provide the access to fire brigades for supplying the sufficient water as quickly & Efficiently as possible. The inlets are provided with any required Fire brigade connections such as CFA/NSW/MFB/QRT/SA with caps & the outlet is with 3" roll grooved connection for the ease of connectivity. The booster supplied by Papillon Australia complies to AS 2419.3.

### STANDARD SPECIFICATIONS:

- BODY MATERIAL** : BRASS / STAINLESS STEEL 304
- COMPLY TO** : AS 2419.3-2012
- TYPE** : REAR ENTRY- SINGLE INLET
- OUTLET CONNECTION** : 80mm ROLL GROOVE
- INLET CONNECTION** : CFA/NSW/MFB/QRT/SA/BI



**Approvals: AS/NZS 2419.3-2012  
(AS PER LATEST STANDARD)**